

# Paris U6 Geography

## 1. La Defence

La Defence

RER A, Metro1



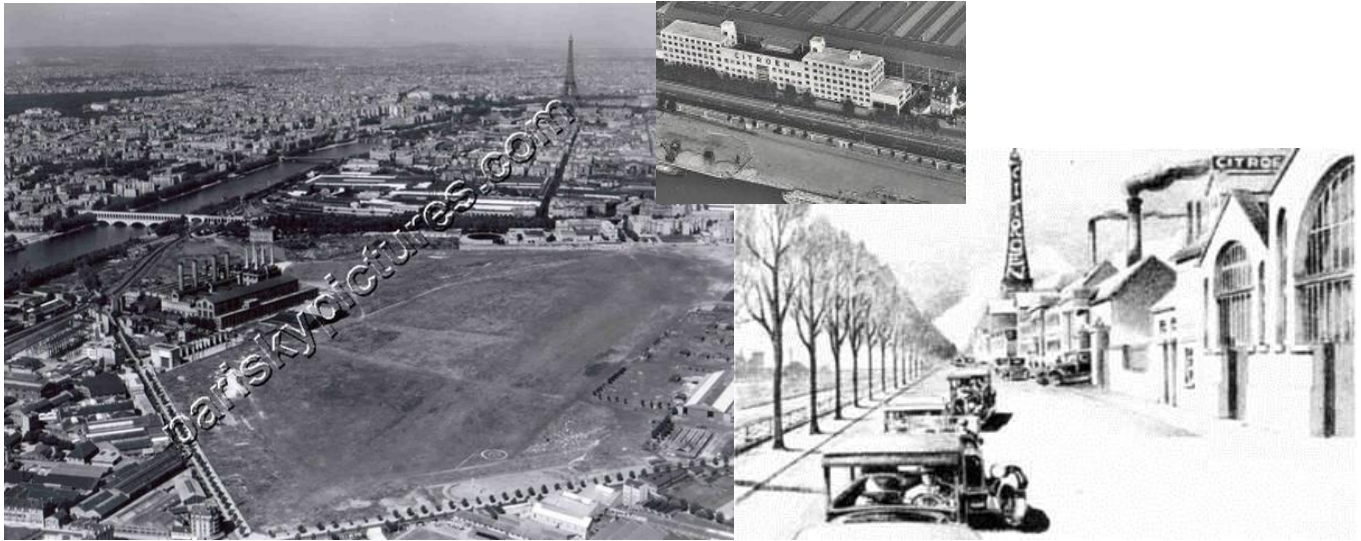
**Evaluate success**

**What would improve the situation?**

## 2. Javel 15<sup>th</sup> Parc Andre Citroen

Javel

RER C Metro10



Year	Population	Density
1962	250,551	29,470
1982	225,596	26,534
1999	225,362	26,507





### 3. Luck 13<sup>th</sup> ? Gare D'Austerlitz RER C, Metro5

#### Bibliotheque Nationale Francois Mitterrand



Year	Population	Density
1962	166,709	23,329
1982	170,818	23,904
1999	171,533	24,004



4. 12<sup>th</sup>, beyond Bercy

Avenue Daumesnil - Le Viaduc des Arts & Promenade Plantee

Wohnhaus mit Postamt on Rue Oberkampf

Menilmontant

Metro2

Wohnhaus mit integriertem Postamt in Rue Etienne-Dolet

Menilmontant

Metro2

Year	Population	Density
1962	161,574	25,337
1982	138,015	21,643
1999	136,591	21,419



5. 4<sup>th</sup> Le Beauborg

Centre Popmpidou -

Rambuteau

Metro 11

Year	Population	Density
1861	108,520	67,783
1962	61,670	38,520
1982	33,990	21,230
1999	30,675	19,160

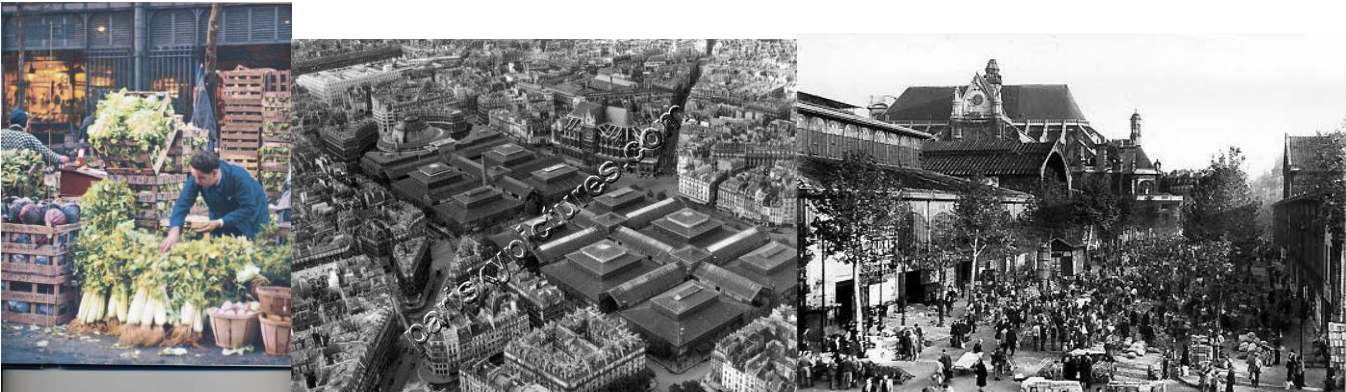




6. 1<sup>st</sup> Les Halles

Les Halles

Metro



Year	Population	Density
1861	89,519	49,025
1962	36,543	20,013
1982	18,509	10,136
1999	16,888	9,228



7. 19<sup>th</sup> - beyond Bellville

Parc de la Villette - Geode, Cite de la Musique

Porte de Pantin      Metro7  
Porte de la Villette    Metro5



Year	Population	Density
1962	159,568	23,514
1982	162,649	23,968
1999	172,730	25,454

